

# Person Authentication by Finger Vein Images: A Review

**Rajwinder Kaur**

Research Scholar, CSE Dept.  
CGC Gharuan, Mohali.

**Rekha Rani**

Assistant Professor, CSE Dept  
CGC Gharuan, Mohali

**Abstract**— Biometric system has been actively emerging in various industries and continuing to roll to provide higher security features for access control system. The proposed system simultaneously acquires the finger surface and subsurface features from finger-vein and finger print images. This paper reviews the acquired finger vein and finger texture images are first subjected to pre-processing steps, which extract the region-of-interest (ROI). The enhanced and normalized ROI images employed to extract features and generate matching score. For this I will develop and investigate two new score-level combinations i.e. Gabour filter, Repeated line Tracking and Neural network comparatively evaluate them more popular score-level fusion approaches to ascertain their effectiveness in the proposed system. MATLAB software will be using for proposed work.

**Keywords**— Finger-Vein Recognition, Gabour Filter, Repeated Line Tracking, Neural Network.

## I. INTRODUCTION

Biometrics is the technique of science which is used to identifying a person using one's physiological or behavioral characteristics. The physiological traits include physical features i.e. hand geometry, finger print or vein, palm print, face, iris, retina, etc, and behavioral traits include behavior features i.e. gait, voice, signature, etc. The basic purpose of biometrics is to provide security. The tremendous growth in the demand for more user friendly and secured biometrics systems has motivated researchers to explore new biometrics features and traits [1]. The anatomy of human fingers is quite complicated and largely responsible for the individuality of fingerprint and finger veins. Due to more uniqueness of fingerprint, it has been attributed to the random imperfections in the minutiae or level-2 fingerprint features. The acquisition of minutiae features needs imaging resolution higher than 400 dpi [1]. The conventional level-1 fingerprint features, which show all finger details such as ridge flow and pattern type [8], can be extracted from the low-resolution fingerprint images [2]. Such features are useful for fingerprint classification and commercially available for fingerprint identification systems that utilize such level-1 features. The use of such features, which can be more conveniently be acquired from the low-resolution images or at a distance, deserves attention for its possible use in personal identification for

civilian and/or forensic applications[1]. The images at such low resolution typically illustrate friction creases and also friction ridges but with varying clarity. Several biometrics technologies are susceptible to spoof attacks in which fake fingerprint, static palm prints, and static face images can be successfully employed as biometric samples to impersonate the identification.

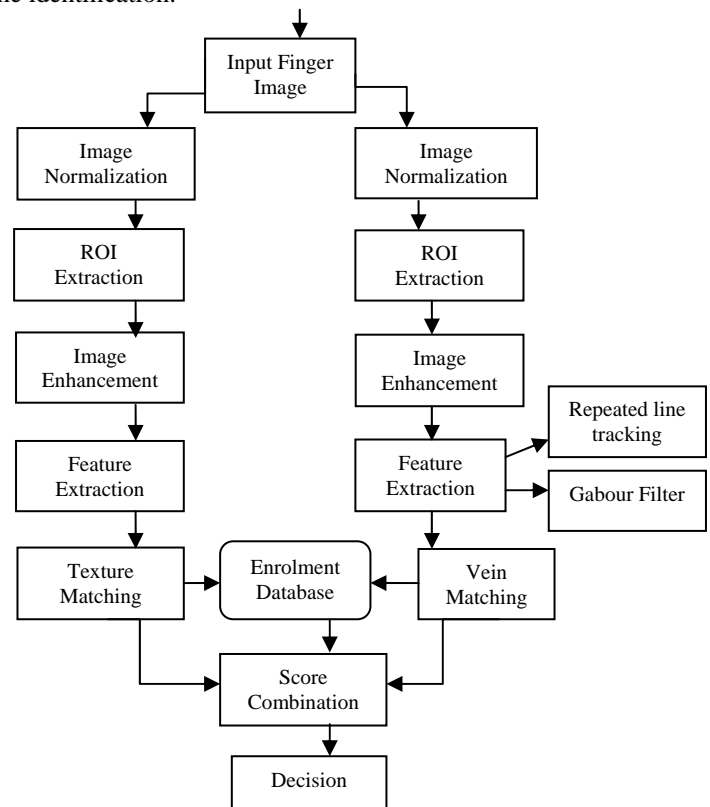


Fig. 1: Personal identification using simultaneous finger texture and finger-vein imaging.

Therefore, several liveness counter measures to detect such sensor-level spoof attacks have been proposed, e.g., fingers response to electrical impulse, finger temperature and electrocardiographic signals, time-varying perspiration patterns from fingertips, and a percentage of oxygen-saturated hemoglobin in the blood[9]. Despite the variety of these suggestions, only a few have been found suitable for

online fingerprint identification. These techniques require close contact between using sensors with the fingers, which makes this technique unsuitable for unconstrained finger images or when the presented fingers are not in close proximity with the sensors.

The acquired finger-vein and finger texture images are first subjected to preprocessing steps, which automatically extract the region-of-interest images while minimizing the translational and rotational variations. After normalized, ROI extracted and enhanced images are employed to extract features and then generate matching scores similar with a conventional biometrics system. The combined matching scores are used to authenticate the user from finger image.

## II. FINGER VEIN IDENTIFICATION

The acquired finger images are noisy with rotational and translational variations resulting from unconstrained or denoise imaging. Therefore, the preprocessing steps performed at input an image that includes: 1) segmentation of ROI, 2) translation and orientation alignment, and 3) image enhancement to extract the features of finger image.

### A. Image normalization

The basic purpose of Normalization is to change the range of pixel intensity value. Sobel edge detector is used to the image to the remove background portions connected to it. Eliminating number of the connected white pixels being less value than a threshold value [1]. The resulting binary mask is formed. Binarization is a method of transforming grayscale image pixels into either black or white pixels by selecting a threshold.

### B. ROI extractor

In the finger images, there are many unwanted regions has been removed by choosing the interested area in that image. ROI is said to be "Region of Interest" which is a useful area. Then obtain binary mask and used to segment the ROI from the original finger-vein image. The orientation of the image is determined to remove the low quality images that present in finger vein image [6].

### C. Image enhancement

The acquired image is thin and not clear. This can be attributed to create the uneven illumination. The acquired images are first divided into  $30 \times 30$  pixels sub blocks and compute the average gray level of the each block. This average gray level is then used to construct average background image using bicubic interpolation. The segmented finger-vein images use automatically filled background area that does not have any useful details. Then, images divided into sub blocks results in the biased estimation of background illumination [2]. The resulting image is then subjected to the local histogram equalization to obtain the final enhanced vein image.

### D. Feature extraction

The normalized and enhanced finger-vein images from the imaging setup depict a vascular network with changing some thickness, clarity, and ambiguity on the topological imperfections/connections [3]. We will use the Repeated Line Tracking and Gabor filter for feature extraction.

- 1) *The Repeated Line Tracking*: The repeated line tracking method gives a promising result in finger-vein identification: The idea is to trace the veins in the image by chosen directions according to predefined probability in the horizontal and vertical orientations. After this starting seed will randomly selected and the whole process will repeatedly done for a certain number of times.
- 2) *Gabour Filter*: It is a linear filter and used for edge detection. The representation of frequency and orientation Gabour filter is similar to those of human visual system. It has been found to be particularly appropriate for texture representation and discrimination. Gabour filter is directly related to Gabor wavelet and can be designed for number of dilations and rotations. Gabour filter can be viewed as a sinusoidal plane of particular frequency and orientation modulated by a Gaussian envelope.

### E. Vein matching

The matching score attempts to compute the best matching scores between two images while accounting for such possible spatial shifts and rotation [4]. Matched filter enhanced vein structures. However, the background noise is highlighted, which could generate matching from vein structures.

## III. FINGER TEXTURE IMAGE

### A. Normalization

In texture preprocessing, Sobel edge detector is used to obtain the edge map and localize the finger boundaries. This edge map is isolated with noise and it can be removed from the area threshold. We extract a fixed  $400 \times 160$  pixel area, at a distance of  $85 \times 50$  pixels, respectively, from the lower and right boundaries, from this rectangular region [6]. This  $400 \times 160$  pixel image is then used as the finger texture image for the identification.

### B. ROI extractor

In the finger texture images, there are many unwanted regions has been removed by choosing the interested area in that image. The useful area is said to be "Region of Interest" (ROI) [6].

### C. Image enhancement

Finger texture image is subjected to median filtering to eliminate the impulsive noise. Therefore obtain the background illumination image from the average of pixels in 10×10 pixel image sub blocks and bi-cubic interpolation [2]. The resulting image is subtracted from the median-filtered finger texture image and then subjected to histogram equalization.

### D. Finger texture image feature extraction

The Localized Random Transform (LRT) and Gabor filter is used for finger texture image feature extraction. The Radon transform [17] is very efficient in detecting and locating lines in the image by integrating the intensity of the image in all possible/predefined orientations. The LRT is efficient in extracting line and curve segments in the local area. Gabor filters optimally capture both local orientation and frequency information from a fingerprint image.

### E. Texture matching

In texture matching, the finger texture image features extracted are encoded in orientations. The matching score attempts to compute the best matching scores between two images while accounting for such possible spatial shifts and rotation. The blockwise matching scheme is used for texture matching.

## IV. SCORE COMBINATION

Score combination predicts that the vein and texture image is matched with the database. The database contains the feature of all vein and texture images. The Extract features and Match features are use. The experimental results presented in this section are focused to ascertain the performance improvement that can be achieved from the simultaneous acquisition of finger-vein and finger texture images. The neural network will used to improve the performance of system. Fig 1 shows the distribution of finger-vein and finger texture matching scores from the genuine and imposter matches.

## V. CONCLUSION

This paper will present a complete finger image-matching framework by simultaneously utilizing the finger vein and finger texture features. It will present a new technique for the finger-vein identification that extract the features of finger image and obtain higher accuracy than previously proposed finger-vein identification approaches. Our authentication scheme will work more effectively in more realistic scenarios and leads to a more accurate performance, as will be demonstrated from the experimental results. We will examine a complete automated approach for the authentication of person by using finger surface texture images for the performance improvement.

## REFERENCES

- [1] Ajay Kumar and Yingbo Zhou, "Human Identification Using Finger Images," IEEE Transactions on Image Processing, vol. 21, no. 4, 2012.
- [2] Jinfeng Yan, Minfu Yan, "Finger-vein Image Enhancement Signal Processing," IEEE 10th International Conference , 2010.
- [3] Pengfei Yu , Dan Xu , Haiyan Li , Hao Zhou, "Fingerprint Image Preprocessing Based on Whole-Hand Image Captured by Digital Camera," International conference on Computational Intelligence and Software Engineering, 2009.
- [4] Beining Huang, Beijing, ChinaShilei Liu, Wenxin Li, "A finger posture change correction method for finger-vein recognition," IEEE Symposium 2012.
- [5] Dingrui Wan and Jie Zhou, "Fingerprint Recognition Using Model-Based Density Map," IEEE Transactions on Image Processing, vol. 15, no. 6, 2006.
- [6] Le Hoang Thai and Ha Nhat Tam, "Fingerprint recognition using standardized fingerprint model," International Journal of Computer Science Issues, vol. 7, no 7, 2010.
- [7] Francesco Turrone, Davide Maltoni, Raffaele Cappelli and Dario Maio, "Improving Fingerprint Orientation Extraction," IEEE Transactions on Information Forensics and Security, vol. 6, no. 3, 2011.
- [8] Jianjiang Feng and Anil K. Jain, "Fingerprint Reconstruction From Minutiae to Phase," IEEE Transactions on Patteran Analysis and Machine Intelligence, vol. 33, no.2,2011.
- [9] P. V. Reddy, A. Kumar, S. M. K. Rahman and T. S. Mundra, "A new antispoofing approach for biometric devices", IEEE Trans. Biomed. Cicuits Syst., Vol. 2, No. 4, 2008
- [10] Sharath Pankanti, Salil Prabhakar and Anil K. Jain, "The Individuality of Fingerprints," IEEE Transactions on Pattern Analysis and Machine Intelligence, vol. 24, no. 8, 2002.
- [11] N.Miura, Nagasaka and T.Miyatake, "Feature extraction of finger-vein patterns based on repeated line tracking and its application to personal identification", Mach. Vis. Appl., Vol. 15, No. 2, 2004.
- [12] N.Miura, Nagasaka and T.Miyatake, "Extraction of finger-vein patterns using maximum curvature points in image profiles based on repeated line tracking and its application to personal identification," Mach. Vis. Appl., vol. 15, no. 2,2005.
- [13] A.K. Jain, Y. Chen and M. Demirkus, "Pores and ridges : High resolution fingerprint matching using level 3 features," IEEE Trans. Pattern Anal. Mach. Intell., vol. 29, no. 1, 2007.
- [14] J. Ortega-Garcia, J. Fierrez, F. Alonso-Fernandez, J. Galbally, M. R. Freire, J.Garcia-Salicetti, L. Allano,Ly-Van and A. Frangi, "The multiscenario multienvironment Biosecure multimodal database(BMDB)," IEEE Trans. Pattern Anal. Mach. Intell., vol. 32, 2010.
- [15] Haiyun Xu, Raymond N. J. Veldhuis, Tom A. M. Kevenaar and Ton A. H. M. Akkermans, "A Fast Minutiae-Based Fingerprint Recognition System," IEEE System Journal, vol. 3, no. 4, 2009.